



6 Longmoor Court, Ashton, Bristol, BS3 2NX  
£289,000

Hollis Morgan – A practically appointed and well maintained 2 bedroom bungalow situated in the ever popular Longmoor Court. (Over 55's )

- Bungalow
- Over 55's
- Two Bedrooms
- Spacious Kitchen
- Gas Central Heating
- Cul-de-sac location
- Private Garden
- Parking
- No Onward Chain

### **The Property**

Longmoor Court is a private development of bungalows situated in a quiet yet extremely convenient location with a host of amenities within close proximity. The related property has been well maintained since ownership and is offered in good decorative order, with gas central heating and double glazing throughout. The accommodation comprises spacious lounge, two bedrooms, boarded loft, white three piece bathroom suite complete with electric shower over low level bath, toilet and basin. The fitted kitchen boasts matching wall and base units, laminated worksurfaces, tiled splash backs, electric cooker with gas hob and plumbing for additional appliances. To the outside ( Access via kitchen ) is a private and low maintenance garden, private parking via a paved driveway is also included.

### **Location**

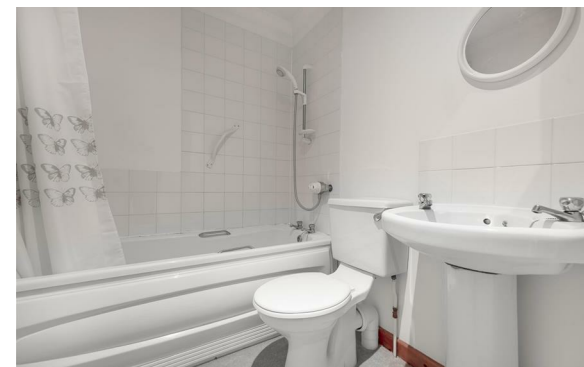
This property has easy access to Bristol City Centre, Bristol International Airport, Ashton Court Estate and the Bristol Link Road. This Ashton location offers the flourishing independent shops, bars and restaurants of North street and is in close proximity to Whapping Wharf and Bristol Temple Meads train station. A vast array of well-respected schools are nearby. This property is welcomed to the sales market with no onward chain.

### **Other Information**

Tenure - Please refer to agent

### **Please Note**

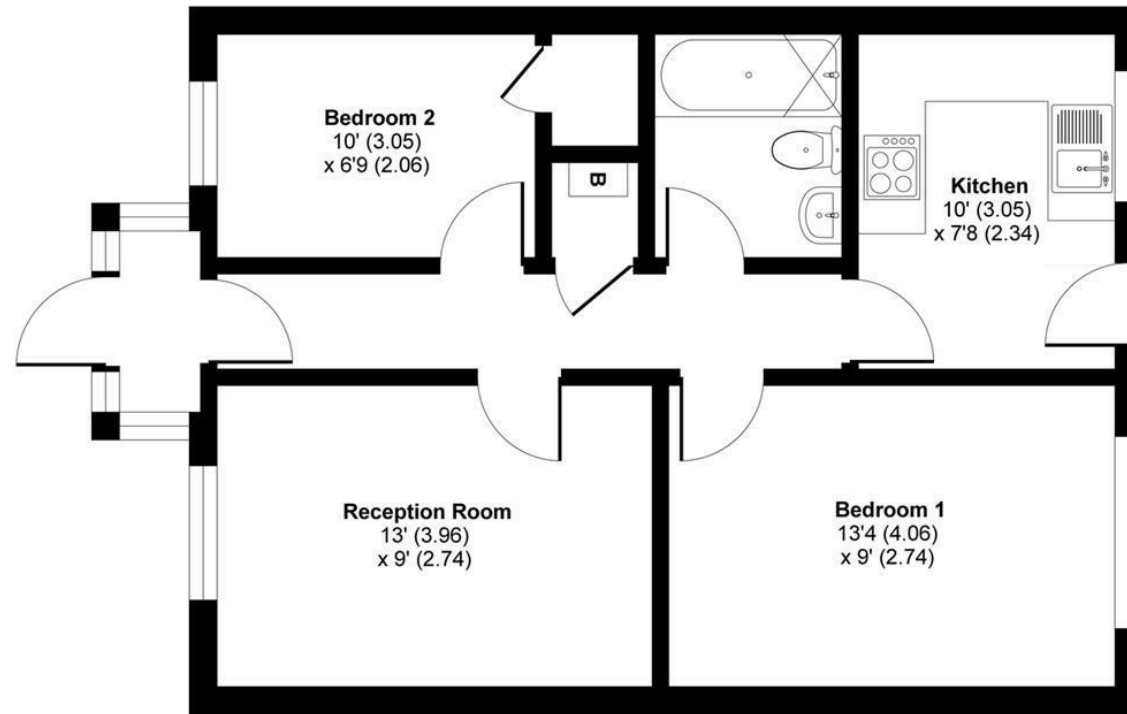
We endeavour to make our sales details accurate and reliable but they should not be relied on as statements or representations of fact and they do not constitute any part of an offer or contract. The seller does not make any representation or give any warranty in relation to the property and we have no authority to do so on behalf of the seller.



# Longmoor Court, Bristol, BS3

Approximate Area = 539 sq ft / 50 sq m

For identification only - Not to scale



**GROUND FLOOR**

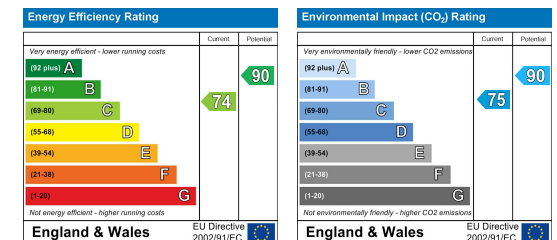


Floor plan produced in accordance with RICS Property Measurement Standards incorporating International Property Measurement Standards (IPMS2 Residential). © n'checon 2020. Produced for Hollis Morgan. REF: 610219

e-mail: [post@hollismorgan.co.uk](mailto:post@hollismorgan.co.uk) [www.hollismorgan.co.uk](http://www.hollismorgan.co.uk)

9 Waterloo Street, Clifton, Bristol BS8 4BT. Telephone: 0117 973 65 65

Hollis Morgan Property Limited, registered in England, registered 7275716. Registered address, 5 Upper Belgrave Road, Clifton, Bristol BS8 2XQ



hollis  
morgan

---